

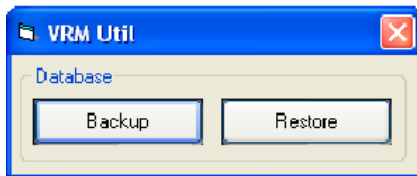
## Migration of VRM Database to new host PC

It is important that for the new VRM installation that they are of the **same** software version as the old VRM installation. This is to ensure standardization within the database. If you do perform an update, make sure to open the VRM application once to ensure that the update completes correctly. The case information locations must be the same on all the VRM systems (for network drives they must have the same assigned drive letter).

Please note: This procedure is intended to migrate a single VRM workstation to a new VRM workstation. It is not intended for multiple installations or a centralized setup.

### **On the old VRM system:**

1. Go to **C:\Program Files\Vigil\VRM** and run the **VRMUtil.exe** program. Press the **Backup** button.



2. After the mouse icon changes from the hourglass to the standard pointer, you can close the program. It will have created a file in the same directory called **vrn.bak**. This file is the backup of the database structure and information. You need to copy this file to the workstation you wish to migrate to for the VRM install. It must be placed in the same directory as the VRMUtil.exe program.

3. Copy over the case materials files from the old VRM system to the new system. You can find the location of these files by checking the Case Materials Path in the VRM Program Settings. The folder names are the same as the case names.

### **On the new VRM system:**

4. Ensure that VRM is installed and the same version as the old VRM system.
5. Copy **vrn.bak** to the new system, run the **VRMUtil.exe** program, and press the **Restore** button. Wait until the mouse icon changes from the hourglass to the standard pointer and then close the program.

**On the new VRM system:**

6. Go to the directory **C:\Program Files\Vigil\DB** and run the batch file called **VRMUpdate.bat**. It will open a command window and will close after completing its scripts. CIMM is now updated with the database information from the original CIMM system.

7. You will also have to re-register any DVRs connected to the VRM host PC. You will have to manually configure the settings options under the General and Path tabs, but all other settings should be duplicated correctly.