

Migration of Sanyo CIMM Databases

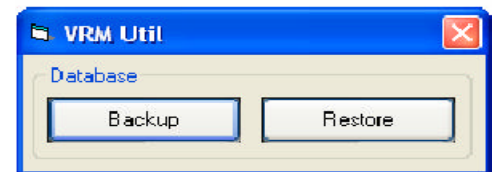
It is important that for the new CIMM installation that they are of the **same software version as the old CIMM installation**. This is to ensure standardization within the database. If you do perform an update, make sure to open the CIMM application once to ensure that the update completes correctly. The case information locations must be the same on all the CIMM systems (for network drives they must have the same Assigned drive letter).

- Please note: This procedure is intended to migrate a single CIMM workstation to a new CIMM workstation. It is not intended for multiple installations or a centralized setup.

On the old CIMM system:

1. Go to **C:\Program Files\Vigil\VRM** and run the **VRMUtil.exe** program. Press the **Backup** button.

2. After the mouse icon changes from the hourglass to the standard pointer, you can close the program. It will have created a file in the same directory called **vrn.bak**. This file is the backup of the database structure and information. You need to copy this file to the workstation you wish to migrate to for the CIMM install. It must be placed in the same directory as the VRMUtil.exe program.



3. Copy over the case materials files from the old CIMM system to the new system. You can find the location of these files by checking the Case Materials Path in the CIMM Program Settings. The folder names are the same as the case names.

On the new CIMM system:

4. Ensure that CIMM is installed and the same version as the old CIMM system
5. Copy vrn.bak to the new system, run the VRMUtil.exe program, and press the RESTORE button. Wait until the mouse icon changes from the hourglass to the standard pointer and then close the program.

6. Go to the directory **C:\Program Files\Vigil\DG** and run the batch file called **VRMUpdate.bat** It will open a command window and will close after completing its scripts. CIMM is now updated with the database information from the original system.

7. You will need to re-register any DSR units attached to the CIMM host. You will have to manually configure the settings options under the general patch tabs, but all other settings should be duplicated correctly.